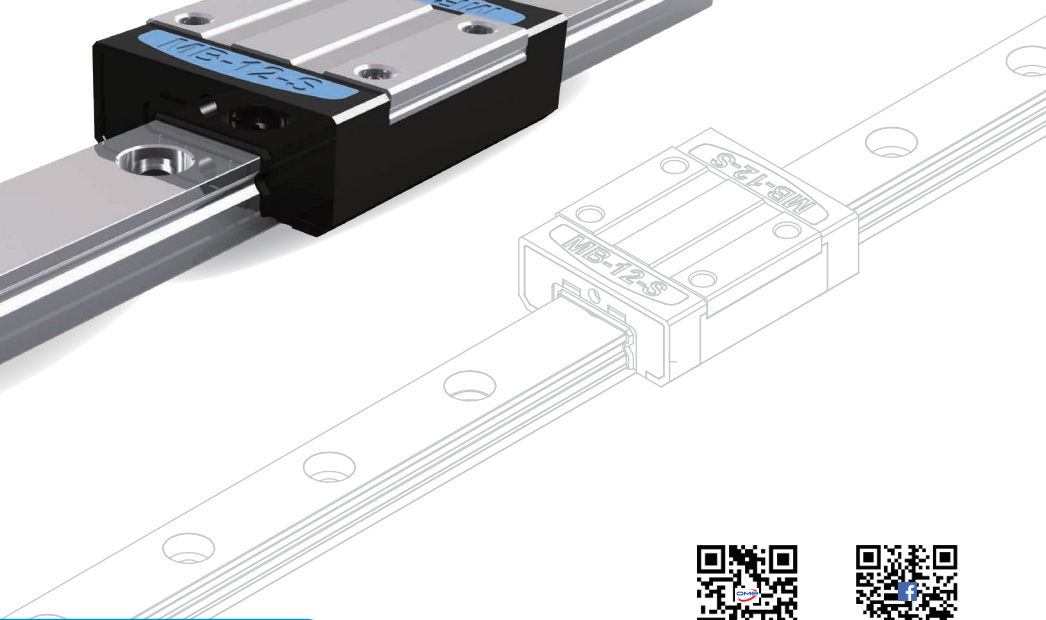
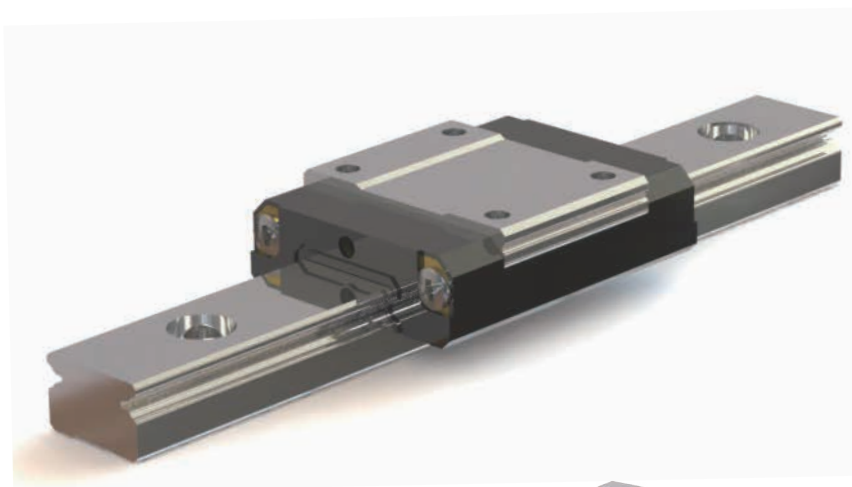




# Miniature Linear Guide

STAF MB Series / MPH Series

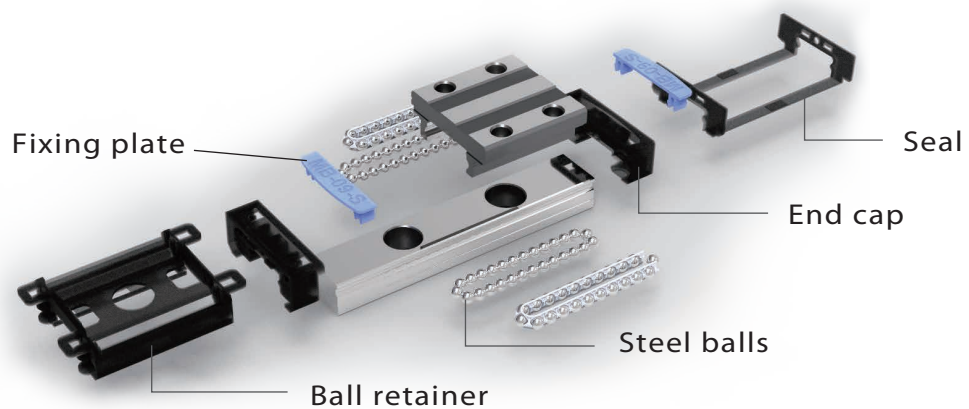
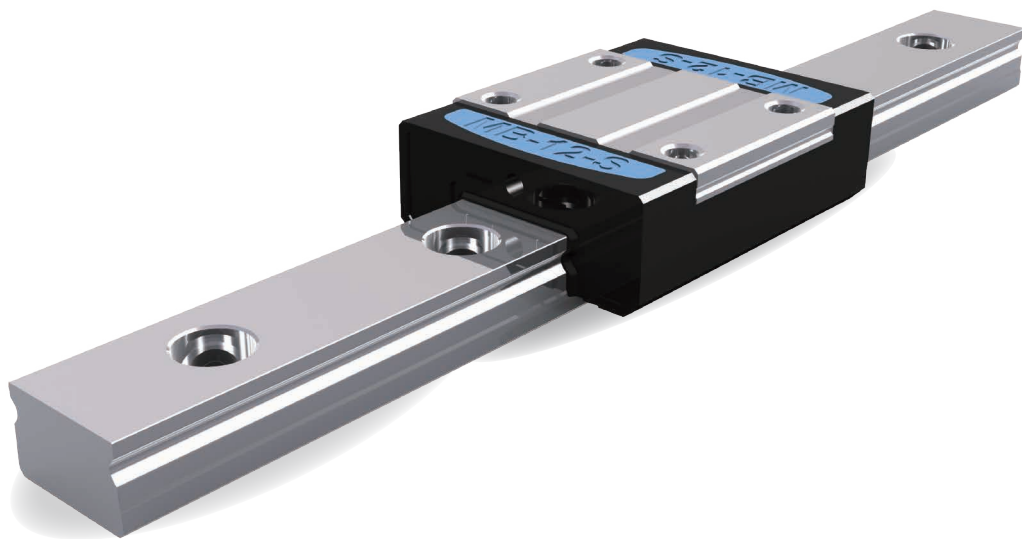
- ▶ Stainless Steel Made
- ▶ Compact Design
- ▶ Lightweight

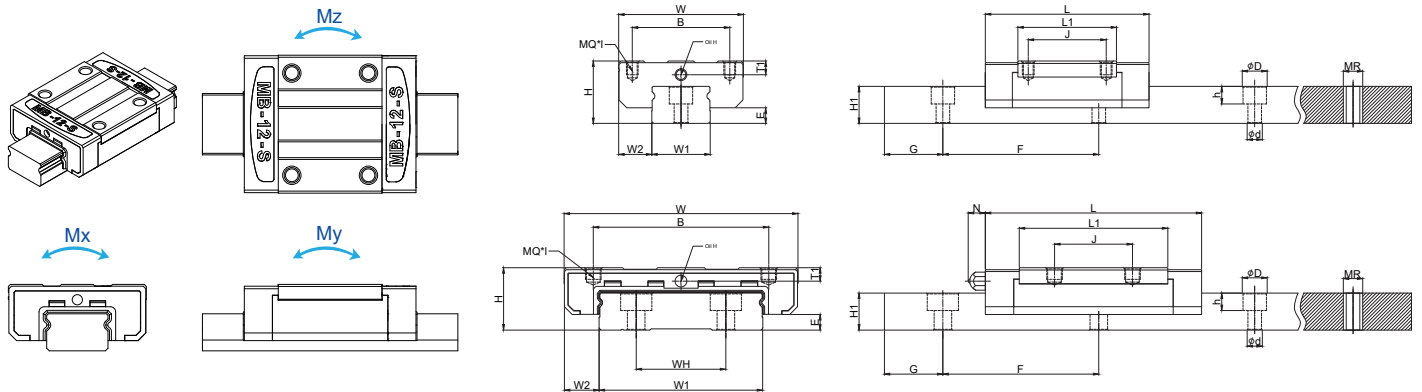




# MB Series

- ▶ Screwless design
- ▶ Caged type reduces noise and improves motion smoothness
- ▶ Caged and Non-caged types share the same profile rail





## MB SERIES >>> MBX Non Cage Type

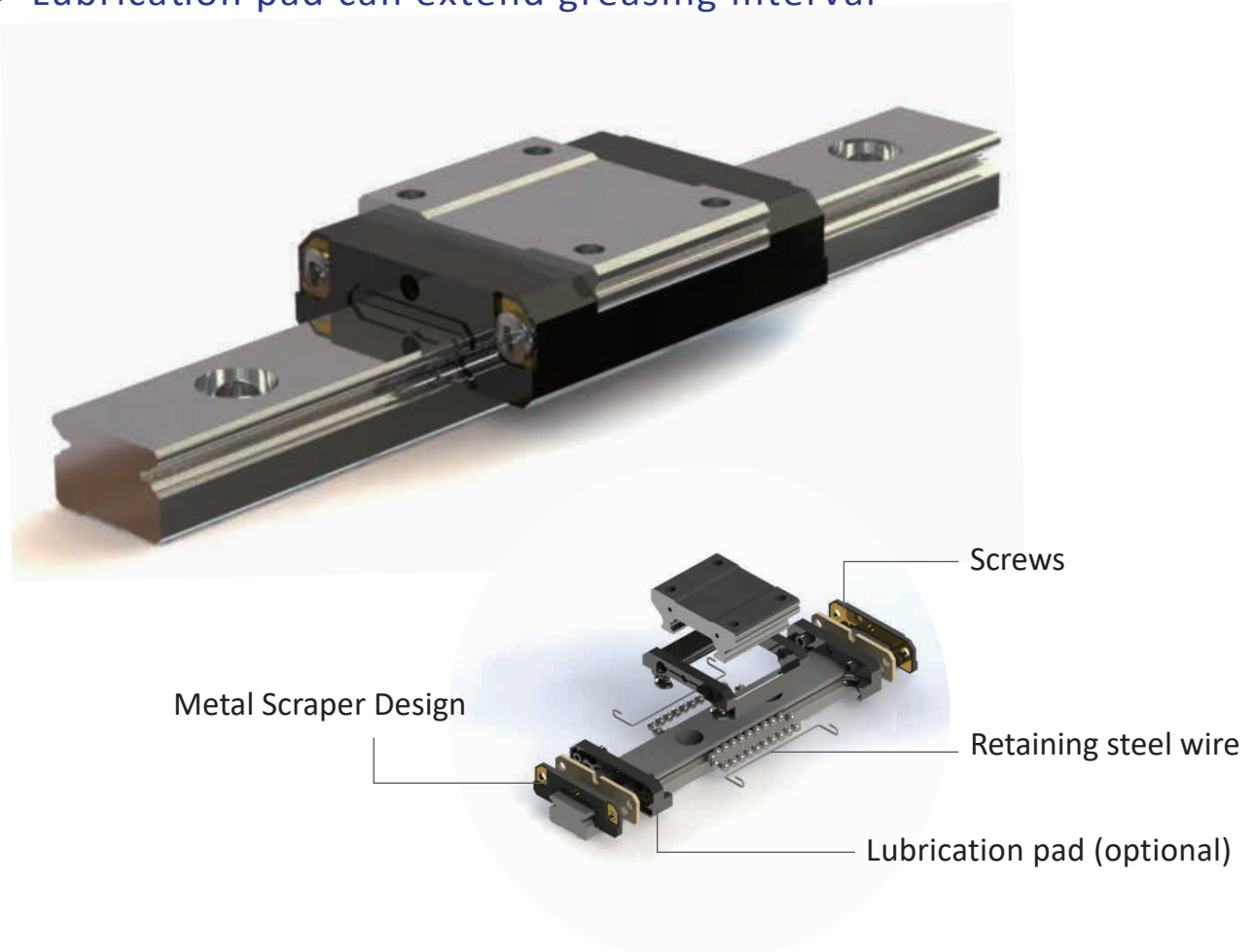
Model	Assembly - mm				Block - mm										Rail - mm										Rating load - kN		Static moment - N·m			Weight	
	H	W	W2	E	L	B	J	MQ	I	L1	Oil-H	T1	N	W1	H1	F	d	D	h	WH	G	MR	L max	C	C0	Mx	My	Mz	Block kg	Rail kg/m	
MBX09SN	10	20	5.5	2.2	30.8	15	10	M3	2.5	19.5	Ø1.5	2.4	-	9	6.05	20	3.5	6	3.3	-	7.5	M4	900	2.01	2.26	10.35	8.34	8.34	0.014	0.39	
MBX09SL	10	20	5.5	2.2	40.5	15	16	M3	2.5	29.2	Ø1.5	2.4	-	9	6.05	20	3.5	6	3.3	-	7.5	M4	900	2.75	3.24	14.71	16.67	16.67	0.020	0.39	
MBX12SN	13	27	7.5	2	34	20	15	M3	3.2	20.3	Ø2	3	-	12	7.25	25	3.5	6	4.25	-	10	M4	900	3.29	3.43	22.48	11.67	11.67	0.029	0.63	
MBX12SL	13	27	7.5	2	47	20	20	M3	3.2	33.3	Ø2	3	-	12	7.25	25	3.5	6	4.25	-	10	M4	900	4.41	5.15	33.34	27.46	27.46	0.047	0.63	
MBX15SN	16	32	8.5	4	42	25	20	M3	3.5	25.3	M3	3.5	5	15	9.5	40	3.5	6	4.5	-	15	M4	900	5.44	5.59	39.23	25.50	25.50	0.047	1.05	
MBX15SL	16	32	8.5	4	59.8	25	25	M3	3.5	43.1	M3	3.5	5	15	9.5	40	3.5	6	4.5	-	15	M4	900	7.16	7.85	54.92	53.94	53.94	0.078	1.05	
MBX09WN	12	30	6	3.4	39	21	12	M3	2.5	26.7	Ø1.5	2.3	-	18	7.5	30	3.5	6	4.5	-	10	M4	900	2.60	3.24	30.60	14.71	14.71	0.030	0.98	
MBX09WL	12	30	6	3.4	51	23	24	M3	2.5	38.7	Ø1.5	2.3	-	18	7.5	30	3.5	6	4.5	-	10	M4	900	3.33	4.22	40.21	26.97	26.97	0.042	0.98	
MBX12WN	14	40	8	3.8	44.5	28	15	M3	3.5	30.5	Ø2	3	-	24	8.7	40	4.5	8	4.5	-	15	M5	900	4.32	5.20	64.73	25.69	25.69	0.052	1.53	
MBX12WL	14	40	8	3.8	59.1	28	28	M3	3.5	45.1	Ø2	3	-	24	8.7	40	4.5	8	4.5	-	15	M5	900	5.59	6.91	86.30	47.56	47.56	0.076	1.53	
MBX15WN	16	60	9	4	55.5	45	20	M4	4.3	38.1	M3	3.5	5	42	9.5	40	4.5	8	4.5	23	15	M5	900	7.26	8.38	171.62	50.02	50.02	0.111	2.97	
MBX15WL	16	60	9	4	74.7	45	35	M4	4.3	57.3	M3	3.5	5	42	9.5	40	4.5	8	4.5	23	15	M5	900	8.92	10.79	220.66	95.62	95.62	0.165	2.97	

## MB SERIES >>> MBC Cage Type

Model	Assembly - mm				Block - mm										Rail - mm										Rating load - kN		Static moment - N·m			Weight	
	H	W	W2	E	L	B	J	MQ	I	L1	Oil-H	T1	N	W1	H1	F	d	D	h	WH	G	MR	L max	C	C0	Mx	My	Mz	Block kg	Rail kg/m	
MBC09SN	10	20	5.5	2.2	30.8	15	10	M3	2.5	19.5	Ø1.5	2.4	-	9	6.05	20	3.5	6	3.3	-	7.5	M4	900	1.90	2.18	8.19	5.00	5.00	0.014	0.39	
MBC09SL	10	20	5.5	2.2	40.5	15	16	M3	2.5	29.2	Ø1.5	2.4	-	9	6.05	20	3.5	6	3.3	-	7.5	M4	900	2.60	2.99	11.01	10.00	10.00	0.020	0.39	
MBC12SN	13	27	7.5	2	34	20	15	M3	3.2	20.3	Ø2	3	-	12	7.25	25	3.5	6	4.25	-	10	M4	900	2.70	3.10	16.07	7.00	7.00	0.029	0.63	
MBC12SL	13	27	7.5	2	47	20	20	M3	3.2	33.3	Ø2	3	-	12	7.25	25	3.5	6	4.25	-	10	M4	900	3.90	4.48	25.36	14.68	14.68	0.047	0.63	
MBC15SN	16	32	8.5	4	42	25	20	M3	3.5	25.3	M3	3.5	5	15	9.5	40	3.5	6	4.5	-	15	M4	900	3.60	4.14	28.21	15.30	15.30	0.047	1.05	
MBC15SL	16	32	8.5	4	59.8	25	25	M3	3.5	43.1	M3	3.5	5	15	9.5	40	3.5	6	4.5	-	15	M4	900	5.40	6.21	40.64	32.36	32.36	0.078	1.05	
MBC09WN	12	30	6	3.4	39	21	12	M3	2.8	26.7	Ø1.5	2.3	-	18	7.5	30	3.5	6	4.5	-	10	M4	900	2.40	2.76	22.52	8.83	8.83	0.030	0.98	
MBC09WL	12	30	6	3.4	51	23	24	M3	2.8	38.7	Ø1.5	2.3	-	18	7.5	30	3.5	6	4.5	-	10	M4	900	3.10	3.56	30.94	16.18	16.18	0.042	0.98	
MBC12WN	14	40	8	3.8	44.5	28	15	M3	3.5	30.5	Ø2	3	-	24	8.7	40	4.5	8	4.5	-	15	M5	900	3.70	4.25	48.00	15.41	15.41	0.052	1.53	
MBC12WL	14	40	8	3.8	59.1	28	28	M3	3.5	45.1	Ø2	3	-	24	8.7	40	4.5	8	4.5	-	15	M5	900	3.90	4.48	64.93	28.54	28.54	0.076	1.53	
MBC15WN	16	60	9	4	55.5	45	20	M4	4.3	38.1	M3	3.5	5	42	9.5	40	4.5	8	4.5	23	15	M5	900	4.90	5.63	126.52	30.01	30.01	0.111	2.97	
MBC15WL	16	60	9	4	74.7	45	35	M4	4.3	57.3	M3	3.5	5	42	9.5	40	4.5	8	4.5	23	15	M5	900	6.60	7.59	165.94	57.37	57.37	0.165	2.97	

# MPH Series

- ▶ Conventional design with retaining steel wire
- ▶ Lubrication pad can extend greasing interval



## MPH SERIES

Model	Assembly - mm					Block - mm								
	H	W	W2	E	L	B	J	MQ	I	L1	Oil-H	T1	N	
# MPHX07SN	8	17	5	1.5	24	12	8	M2	2.3	13	Ø1.1	1.7	-	
MPHX09SN	10	20	5.5	2.3	33.9	15	10	M3	3	20.4	Ø1.3	2.2	-	
MPHX09SL	10	20	5.5	2.3	43.9	15	16	M3	3	30.4	Ø1.3	2.2	-	
MPHX12SN	13	27	7.5	3.05	36.4	20	15	M3	3.5	20.4	Ø2.0	2.9	-	
MPHX12SL	13	27	7.5	3.05	48.8	20	20	M3	3.5	32.9	Ø2.0	2.9	-	

# Lubrication System unavailable

## Accuracy Standards

Unit mm

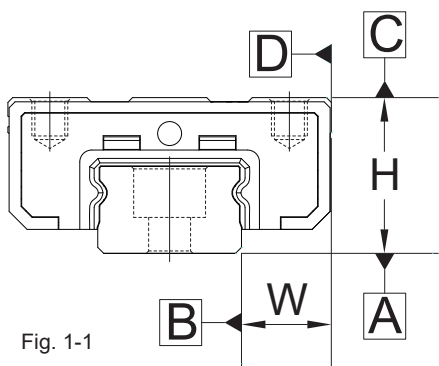
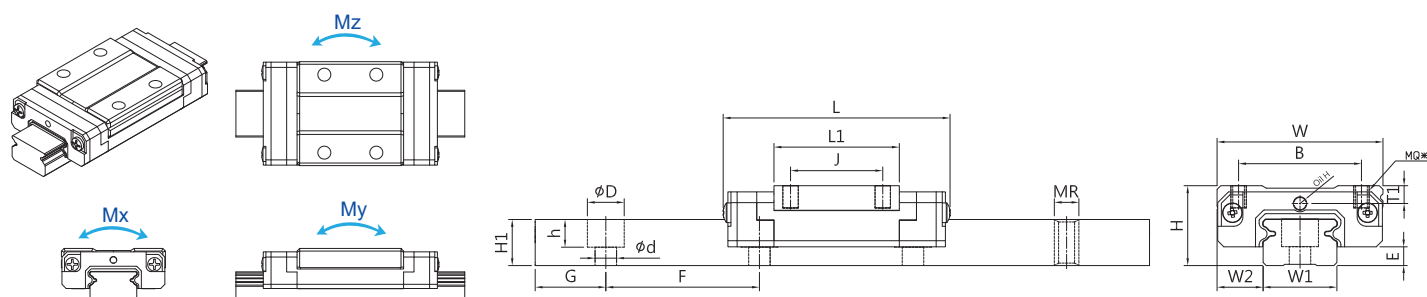
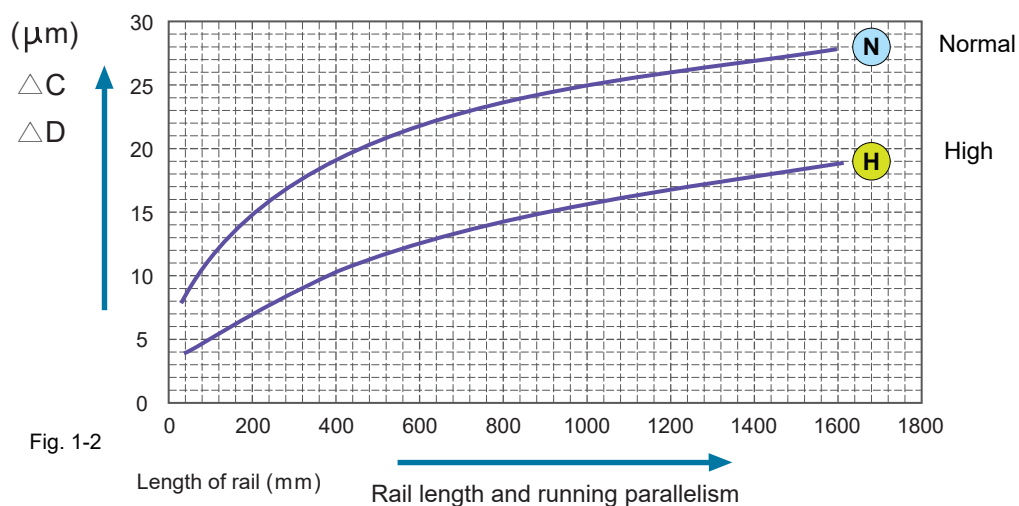


Fig. 1-1

	<b>N</b> Normal	<b>H</b> High
Dimensional tolerance of height (H)	±0.04	±0.02
Dimensional tolerance of width (W)	±0.04	±0.025
Variation of heights (ΔH)	0.03	0.015
Variation of widths (ΔW)	0.03	0.02
Running Parallelism of Block surface <b>C</b> with respect to surface <b>A</b>	ΔC Refer to Fig. 1-1, 1-2	
Running Parallelism of Block surface <b>D</b> with respect to surface <b>B</b>	ΔD Refer to Fig. 1-1, 1-2	



	Rail - mm											Rating load - kN		Static moment - N · m			Weight	
	W1	H1	F	d	D	h	WH	G	MR	L max	C	C0	M <sub>x</sub>	M <sub>y</sub>	M <sub>z</sub>	Block - kg	Rail - kg/m	
	7	4.7	15	2.4	4.5	2.4	-	5	M3	450	1.02	1.26	4.97	3.05	3.65	0.009	0.25	
	9	5.5	20	3.5	6	3.3	-	7.5	M4	900	1.93	3.42	12.87	7.04	7.04	0.019	0.3	
	9	5.5	20	3.5	6	3.3	-	7.5	M4	900	2.67	5.47	20.02	13.64	13.64	0.027	0.3	
	12	7.5	25	3.5	6	4.3	-	10	M4	900	2.87	4.80	22.58	13.55	13.55	0.033	0.60	
	12	7.5	25	3.5	6	4.3	-	10	M4	900	3.92	7.40	38.39	33.20	33.20	0.05	0.60	



[www.ome.com.tw](http://www.ome.com.tw)

# MEMO

A series of horizontal dashed lines for writing.



[www.ome.com.tw](http://www.ome.com.tw)

# MEMO

A series of horizontal dashed lines for writing.

# Miniature Linear Guide

www.staf.com.tw

## Product Codes

MBC	D	12	S	N	2	UA	L	500	H	Z0	11	R	1
<p>Carriage type  <b>MBX:</b> Non-caged  <b>MBC:</b> Caged  <b>MPH</b></p>													
<p>Material  <b>D:</b> Stainless steel</p>													
<p>Size  <b>MB: 09, 12, 15</b>  <b>MPH: 07, 09, 12</b></p>													
<p>Rail width  <b>S:</b> Standard, <b>W:</b> Wide</p>													
<p>Carriage length  <b>N:</b> Standard, <b>L:</b> Long</p>													
<p>Number of carriages            UA: Lubrication system(Only MPH)</p>													
<p>Rail mounting type  <b>L:</b> Counterbored holes (standard)  <b>C:</b> Bottom tapped holes  <b>J:</b> Jointed rails (counterbored holes)  <b>D:</b> Jointed rails (bottom tapped holes)  <b>X:</b> Customized</p>													
<p>Rail length (mm)</p>													
<p>Precision grades  <b>N:</b> Normal, <b>H:</b> High</p>													
<p>Preload  <b>Z0:</b> No preload, <b>Z1:</b> Light preload</p>													
<p>Number of parallel rails</p>													
<p>Surface treatment (precision grade N only)            Leave blank if surface treatment isn't required  <b>D:</b> Trivalent chromium, <b>R:</b> Fluoride chromium, <b>K:</b> Black chromium  <b>N:</b> Nickel, <b>B:</b> Black oxide, <b>P:</b> Phosphate</p>													
<p>Treated parts  <b>1:</b> Rail only  <b>2:</b> Carriage only  <b>3:</b> Rail and carriage</p>													



No.46, Ln. 168, Sanshu Rd., Sanxia Dist., New Taipei City 237, Taiwan  
 Tel:+886-2-26716600 Fax:+886-2-26711400



© OME Technology, certificated by SGS with ISO9001

Regarding the newest product and certification information, please refer to the official website.